



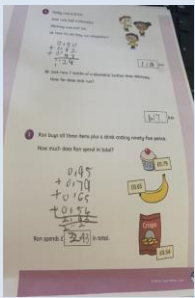
The Reaside Way:
Communication - Pride - Respect



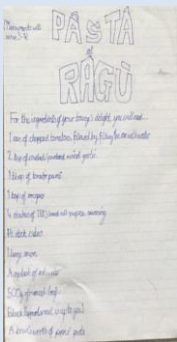
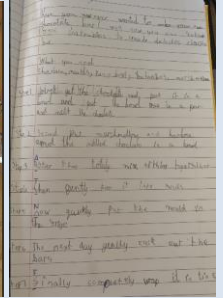
Emily W, 5S has been busy making a 3 course dinner for her family this week.



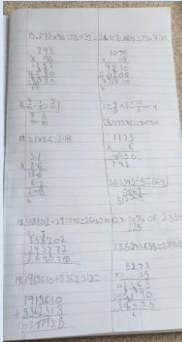
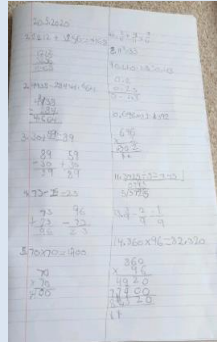
Ava-Lei R, 3D has been busy creating her own time capsule and has now buried it.



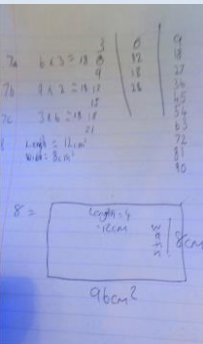
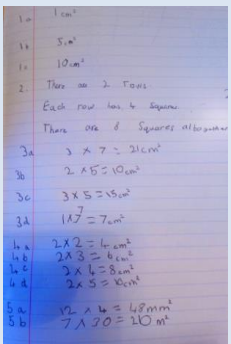
Oliver B, 5S has done some Maths and designed a chocolate bar, writing ingredients, making them and then creating packaging for them.



Logan R, 5S has been cooking for his family. He wrote a set of instructions, got the ingredients ready and then made dinner.



Amelia W, 5S has also been doing her Maths work this week.



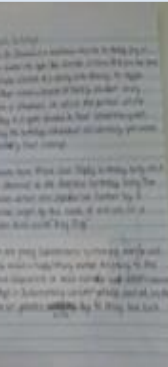
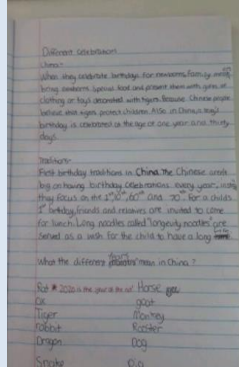
Ellie T, 5S has been working out the area of rectangles for her Maths work.



Jaiden O, 5S has enjoyed time in the sunshine playing with his mom and getting creative with chalk.



Lola B, 6R has been doing some Art work this week, creating these lovely drawings.



Harrison B, 5FW has been researching birthday celebrations in different countries and what their traditions are.



Preparations for possible re-opening of Reaside

Thank you for your patience while we waited for further information on reopening schools – the government has now published more guidance, and we wanted to share what we know so far below. It is apparent that for the foreseeable future the vast majority of our pupils will continue to learn at home. During this time, our teachers will continue to set work and provide feedback remotely. It is, however, **becoming increasingly likely that pupils in year groups 3, 4 and 5 are not likely to return to school until September.**

With regard to a phased return of Year 6, at present the government has stated that 'face-to-face' support to supplement the remote education of Year 6 pupils' could begin, at the earliest, from 1st June. We are now beginning to look at how we are able to best facilitate this. As you can appreciate though, there are a vast number of considerations that need to be taken account of before we are in a position to confirm this.

We are conducting a detailed review of our site and this will assist us with our plans and risk assessments. This will enable us to plan welcoming some pupils and staff back into school and ensure we can support hygiene and social distancing measures.

It is important that all parents/carers and pupils are clear that this announcement **does not mean that Year 6 will be returning to full time school-based learning in the near future.** The most likely outcome is that these pupils will have some opportunity to attend school on certain days of the week to work with staff. This will supplement and support work being set remotely. The work set at home will be the same work that will be set at school.

The order of priority outlined by the government is set out below:

- **The children of key workers and pupils who already qualify for a place under current government guidance.**
- Nursery aged pupils
- Reception aged pupils
- Pupils in year 1 and **year 6**

We will be contacting you if you are in the key worker group (or family that qualify for a place) in order to determine your childcare needs. If you are not contacted by 22nd May and feel you qualify for this group please email: childcare@reasideacademy.com

We are currently in the process of determining the number of year 6 children who plan to return should we re-open (see post on Dojo). This will help us determine group size and staffing which will be shared with you by 1st June. Please be aware no decisions have been confirmed but it is anticipated that the government will make a final decision on 28th May. As soon as this is determined, we will contact you with further information (either on 29th May or 1st June).

We all miss the fun and laughter that we were so used to, the learning and assemblies, the singing and socialising that was possible. Until this can happen though, school will be a very different place and I wanted to outline some of the precautions we'll be taking which include:

Limiting class sizes, Staggering drop off and pick up times, break times and lunchtimes, Increasing cleaning and Keeping pupils and staff with coronavirus symptoms at home

The government has been clear that pupils who are shielded due to their medical vulnerability or who are at particular clinical risk, or who live in a household with someone who is shielded or otherwise clinically at risk should remain at home. Please refer to government guidance for further details of these groups.

Clearly we all share the view that it will be positive for children to be back in school, but this has to be when schools are and you as parents are reassured that this will be safe. This is why the government is encouraging parents to support the phased return to school, but they have **confirmed that attendance is not compulsory at this time.**

In the meantime, if you have questions or concerns then please contact enquiry@reasideacademy.com.

Kind regards
Mrs Wiseman, Headteacher

For further information regarding what's going on at Reaside Academy, please visit our website – www.reasideacademy.co.uk Follow us on twitter

If you wish to contact us please email enquiry@reasideacademy.com or phone 0121 675 7235.